

CAT8 S/FTP CABLE:



Cat8 S/FTP cable constructed with 4-pair, 22 AWG conductor. Available in 305 Mtr per Roll.

DESCRIPTION:

- Rated temperature: 75°C
- Reference standard: UL444, ANSI/TIA-568-C.2-1, ISO/IEC 11801, IEC 61156-9, ANSI/TIA-568.2-D
- Flame test: IEC 60332-1-2
- Oxygen free copper conductor
- LSZH jacket
- Data Transmission Frequency up to 2000 MHz

SPECIFICATION:

Cable Category	Category 8
Cable Construction	S/FTP
Overall Length (m)	305
Conductor Material	Solid Bare Copper
Conductor Size (mm)	0.63±0.02mm
Number of Pairs	4
Conductor Gauge (AWG)	22 AWG
Insulation Material	Foam PE
Twisting Lay Length	≤30mm
Cabling Lay Length	≤200mm
Primary Overall Shield & Material	Tinned Copper Braid
Jacket Material	LSZH
Jacket Thickness Nominal	0.55mm
Overall Nominal Dimension	8.4±0.30mm
Jacket Color	White (RAL9010), Light Gray (RAL7035)

MECHANICAL CHARACTERISTICS	
Temperature operating range	-20 to +75C
Bulk Cable Weight Approx	72.0 kg/km
Max. Recommended Pulling Tension	110N
Min. Bend Radius (Install)	8X O.D
Outer Jacket Tensile Strength	≥9.0MPa
Outer Jacket Elongation	≥100%
ELECTRICAL CHARACTERISTICS	
Pair to Ground Capacitance Unbalance	≤99pF/30m
Velocity of Propagation (NVP)	74%
Max. Delay Skew	25 ns/30m
Max. Conductor Resistance Unbalance	4% (@ 20C) within a pair
Dielectric Strength	2,5 kV d.c. for 2 sec
Conductor/conductor	1,0 kV d.c. for 1 min

APPLICATION:

- 100Base-T4
- 100Base-TX
- 100VG-AnyLAN
- 1000Base-T
- 1000Base-TX
- 155Mbps ATM
- 633Mbps ATM
- 10 Gb Ethernet
- 25GB Base-T, 40GB Base-T

ORDERING INFORMATION:

Description	Part Number
Cat8 S/FTP Cable, LSZH, 305 Mtr	KN-C8SLSC-305

COPPER PATCH PANEL, EMPTY:



Copper 24/48 Port Patch Panel Empty. The clear numbering on the front and back of the network patch panel enables quick and easy identification of cable runs.

SPECIFICATION:

Product Type	19" Patch Panel
Performance Level	Category 6/6A/7/8
Number of Empty Ports	24/48
Panel Type	Flat
Connector type	RJ45
Operating temperature	-20°C to 60°C
Number of Rack Units	1U/2U
Standard Color	Black

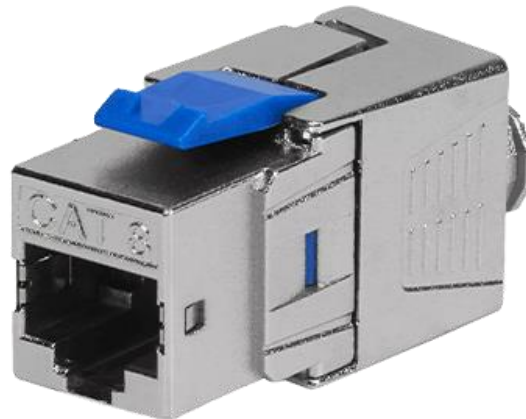
FEATURES:

- Metal Frame
- Connects 24/48 copper ports
- Rack-mountable on a 19 rack (1U of space)
- Easy for wiring installation.

ORDERING INFORMATION:

DESCRIPTION	PART NUMBER
24 Port Copper Patch Panel, Unloaded	KN-C6UPP-24P-E
48 Port Copper Patch Panel, Unloaded	KN-C6UPP-48P-E

CAT8 FTP KEYSTONE JACK:



Network module is a kind of high speed, high performance and flame retardant data module. As a kind of network accessory, it plays a role of intermediate connector, and we can also think it as a data transit station. The network module is mainly working with patch panel, faceplate, and distribution box.

SPECIFICATION:

Product Name	Cat8 FTP Keystone Jack
Color	Silver (Metal)
Application	Wall outlets / Patch panels
Shield Type	FTP
Angel	180 Degree
Temperature	-10°C to 60°C
Insertion Force	30N Max. (IEC 60603-7)
Mating Cycles	750 Cycles Minimum
IDC Mating Cycles	20 Installation Cycles Minimum

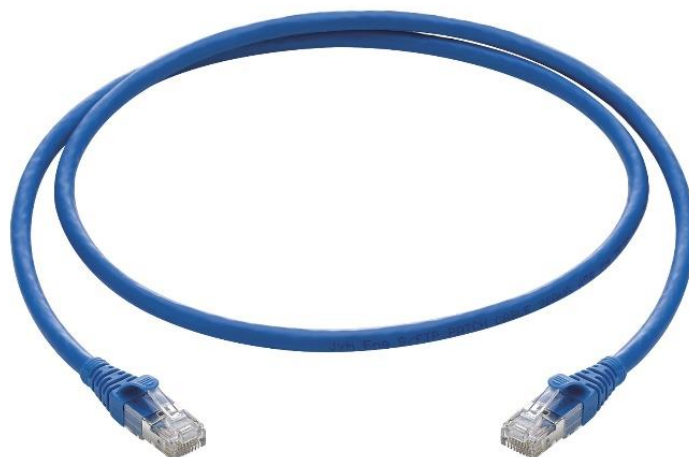
FEATURES:

- Solid & Stranded Conductor: 22AWG~26AWG for Cat8 type
- RJ45 Jack: Housing : Zinc die-casting with nickel plated
- IEEE 802.3af PoE and IEEE 802.3at PoE+ applications
- ISO/IEC 11801, ANSI/TIA-568.2-D

ORDERING INFORMATION:

DESCRIPTION	PART NUMBER
Cat8 FTP Keystone Jack	KN-C8FKCM

CAT8 S/FTP PATCH CORD:



Cat8 S/FTP patch cable features 26AWG unshielded twisted pair stranded copper cable with a high performance modular plug at each end. Snagless design protects the locking clips on the RJ45 connectors from being damaged or snapped off during installation.

1Mtr, 2Mtr, 3Mtr, 5Mtr, 10Mtr etc Patch Cords. Available in Different Colors.

SPECIFICATION:

Cable Type	Cat8
Conductor Material	Bare Copper
Shielding Type	S/FTP
Gauge (AWG)	26
Twisted Pairs	4 Pairs
Outer Jacket	LSZH/PVC
Cable Outer Diameter (mm)	6.5mm ± 0.2 mm
Conductor Resistance	≤5Ω
Insulation Impedance	5mΩ
DC Test Voltage	≥300V/0.02 sec
RJ45 Gold Riveting Height	5.89~ 6.15mm
Pin Out	T568B Wiring
Operating temperature	-20°C to 60°C

FEATURES:

- Cat8 S/FTP Patch cord, 26AWG
- Wiring scheme-T568B
- Overall Shield-Tinned Copper Braid
- ISO/IEC 11801:2011

ORDERING INFORMATION:

DESCRIPTION	PART NUMBER
Cat8 S/FTP Patch Cord, LSZH, 1 Mtr	KN-C8SLSPC-1M
Cat8 S/FTP Patch Cord, LSZH, 2 Mtr	KN-C8SLSPC-2M
Cat8 S/FTP Patch Cord, LSZH, 3 Mtr	KN-C8SLSPC-3M
Cat8 S/FTP Patch Cord, LSZH, 5 Mtr	KN-C8SLSPC-5M

LS= LSZH, PV=PVC

Available in different lengths - KN-C8SLSPC-XXM

XX – Length of Patch Cord.

CAT8 FIELD TERMINATION PLUG:



SPECIFICATION:

Product Name	Cat8 Field Termination Plug
Shield Type	STP
Insertion Force	30N Max. (IEC 60603-7)
Mating Cycles	750 Cycles Minimum
IDC	Suitable for 22-24AWG stranded and solid wire
IDC Mating Cycles	20 Installation Cycles Minimum
Temperature	-10°C to 60°C

FEATURES:

- Solid & Stranded Conductor: 22AWG~26AWG for Cat8 type
- Suitable for the PoE plus (IEEE 802.3at) applications
- Housing : Zinc die-Casting with nickel plated
- RJ45 Plug: Housing : PC, UL 94V-2
- Boot Housing: Zinc die-casting with nickel plated
- IDC Terminal : Titanium copper with tin plated
- ANSI/TIA-568B

ORDERING INFORMATION:

DESCRIPTION	PART NUMBER
Cat8 Field Termination Plug	KN-C8SFTP

