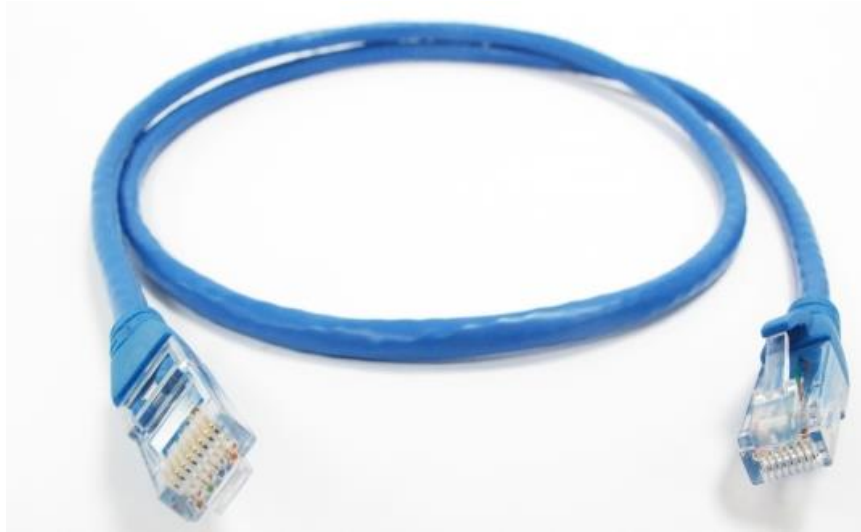


CAT6 UTP PATCH CORD:



Cat6 UTP patch cable features 23AWG unshielded twisted pair stranded copper cable with a high performance modular plug at each end. Snagless design protects the locking clips on the RJ45 connectors from being damaged or snapped off during installation.

1Mtr, 2Mtr, 3Mtr, 5Mtr, 10Mtr Patch Cords.

SPECIFICATION:

Cable Type	Cat6
Conductor Material	Solid Bare Copper
Shielding Type	UTP
Gauge (AWG)	23
Twisted Pairs	4 Pairs
Outer Jacket	LSZH/PVC
Cable Outer Diameter (mm)	6.0mm \pm 0.2 mm
Conductor Resistance	$\leq 5\Omega$
Operating temperature	-20°C to 60°C

FEATURES:

- Cat6 UTP Patch cord, 23AWG.
- Snagless PVC boots.
- Cat6 compliant performance to ANSI/TIA-568.
- Wiring scheme-T568B.
- Rated for 250MHz communications.

ORDERING INFORMATION:

DESCRIPTION	PART NUMBER
Cat6 UTP Patch Cord, LSZH, 1 Mtr	KN-C6ULSPC-1M
Cat6 UTP Patch Cord, LSZH, 2 Mtr	KN-C6ULSPC-2M
Cat6 UTP Patch Cord, LSZH, 3 Mtr	KN-C6ULSPC-3M
Cat6 UTP Patch Cord, LSZH, 5 Mtr	KN-C6ULSPC-5M
Cat6 UTP Patch Cord, LSZH, 10 Mtr	KN-C6ULSPC-10M

LS= LSZH, PV=PVC

HEAD QUARTERS:

BARTYCKA 22B M21A 00-716
WARSAWA, POLAND.

For more information visit us at
www.korekonekt.com