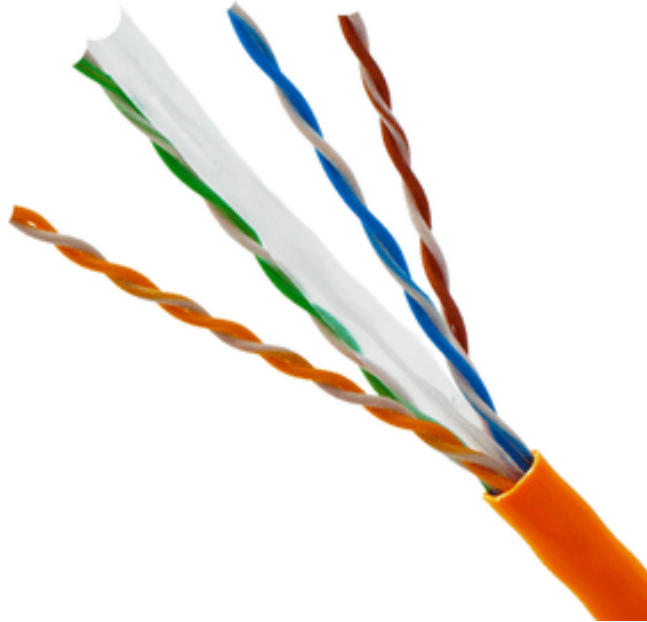


**CAT6A UTP CABLE:**

Cat6A UTP cable constructed with 4-pair, conductor is 23 AWG. Available in 305 & 500 Mtr per Box/Drum.

**SPECIFICATION:**

Cable Category	Category 6A
Cable Construction	U/UTP
Sheath	LSZH
Overall Length (m)	305/500
Conductor Material	Solid Bare Copper
Conductor Size (mm)	0.56±0.005mm
Number of Pairs	4
Conductor Gauge (AWG)	23
Insulation	Polyolefin
Resistance Properties	Flame Retardant
Package Type	Pullout Box/Drum
Temperature operating range	-20 to +60C
Installation temperature range	0 to +60C
Characteristic Impedance	1-500 MHz
DC Resistance	93.0 Ohm/Km max.
Resistance unbalance	2% max.

Capacitance	45 pF/m max. @ 1 KHz
Capacitance Unbalance	1500 pF/m max. @ 1 KHz
Velocity of Propagation (NVP)	78-80%
Dielectric strength	1500 Volts/1 minute

**FEATURES:**

- Cat6A UTP LAN Cable
- 4 twisted pairs
- 23AWG cable diameter
- LSZH jacket material
- ANSI/TIA/568.2-D
- Cable Characteristic Impedance up to 500 MHz.

**ORDERING INFORMATION:**

DESCRIPTION	PART NUMBER
Cat6A UTP Cable, LSZH, 500 Mtr	KN-C6AULSC-500

**HEAD QUARTERS:**

BARTYCKA 22B M21A 00-716  
 WARSZAWA, POLAND.

For more information visit us at  
[www.korekonekt.com](http://www.korekonekt.com)